

# REVISION HISTORY

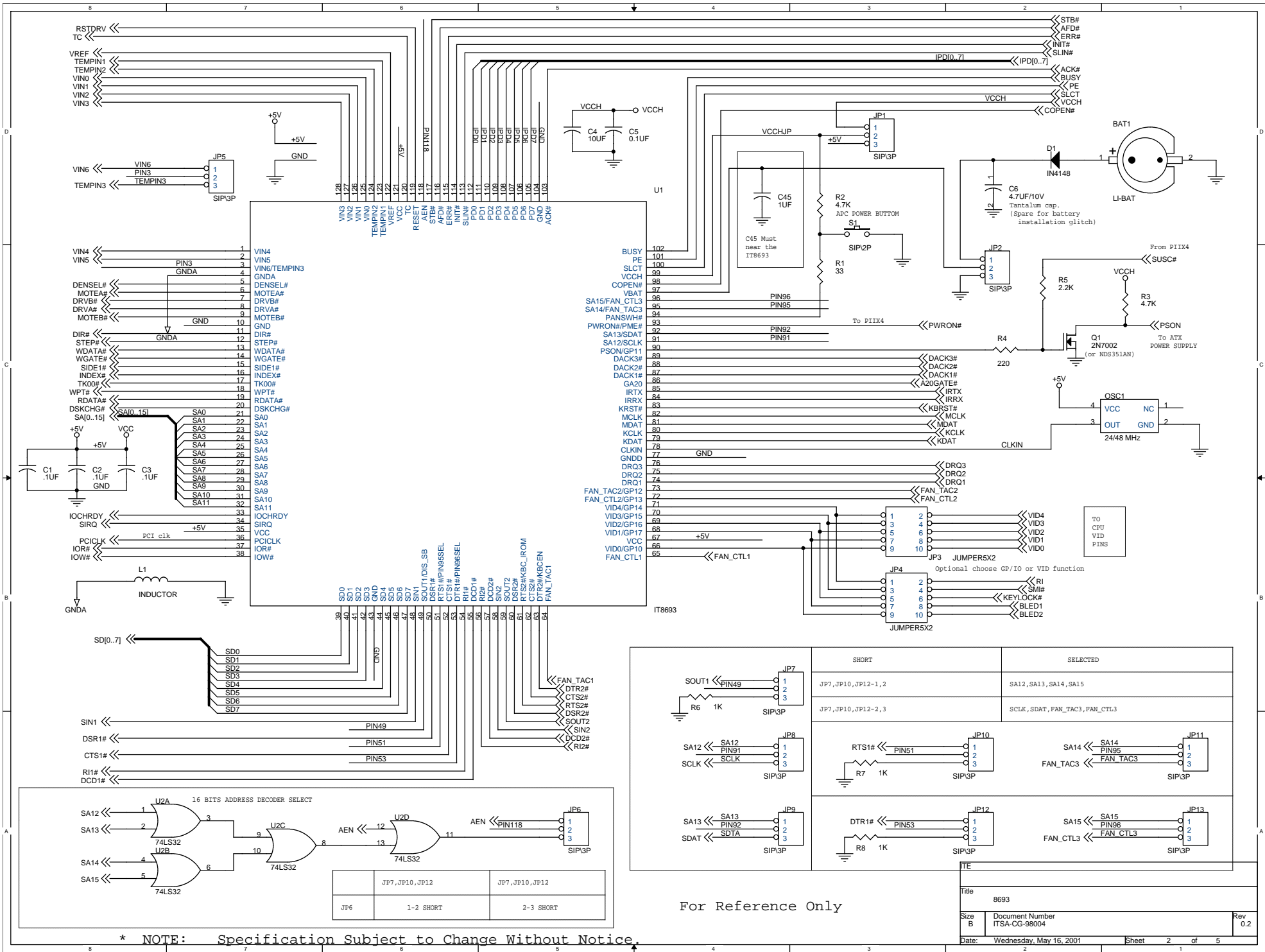
SCHEMATICS REVISION	PCB REVISION	DATE	MODIFICATION ITEM	DRAWING AND P.C.B. MODIFICATION DESCRIPTION
ITSA-CG-98004 VER 0.1		SEP.21'98	Subject : IT8693F APPLICATION CIRCUIT.	FIRST DRAFT
ITSA-CG-98004 VER 0.2		JAN.05'99	FAN_CTL1,FAN_CTL2,FAN_CTL3 ADD PULL UP RESISTOR R63,R64,R65(EP5.SCH) VIN2 ADD OPTIONAL RESISTOR R68(EP5.SCH)	

LINK	IT8693 ACE I/O
EP2.SCH	FDC,COM,PRINTER,IR CONNECTORS
EP3.SCH	ISA SLOT,AT KB,PS/2 MOUSE CONNECTORS
EP4.SCH	FAN & THERMISTOR
EP5.SCH	

\* NOTE: Specification Subject to Change Without Notice.

For Reference Only

ITE		
Title IT8693F & IT8673F APPLICATION CIRCUIT		
Size B	Document Number ITSA-CG-98004	Rev 0.2
Date: Wednesday, May 16, 2001	Sheet 1	of 5



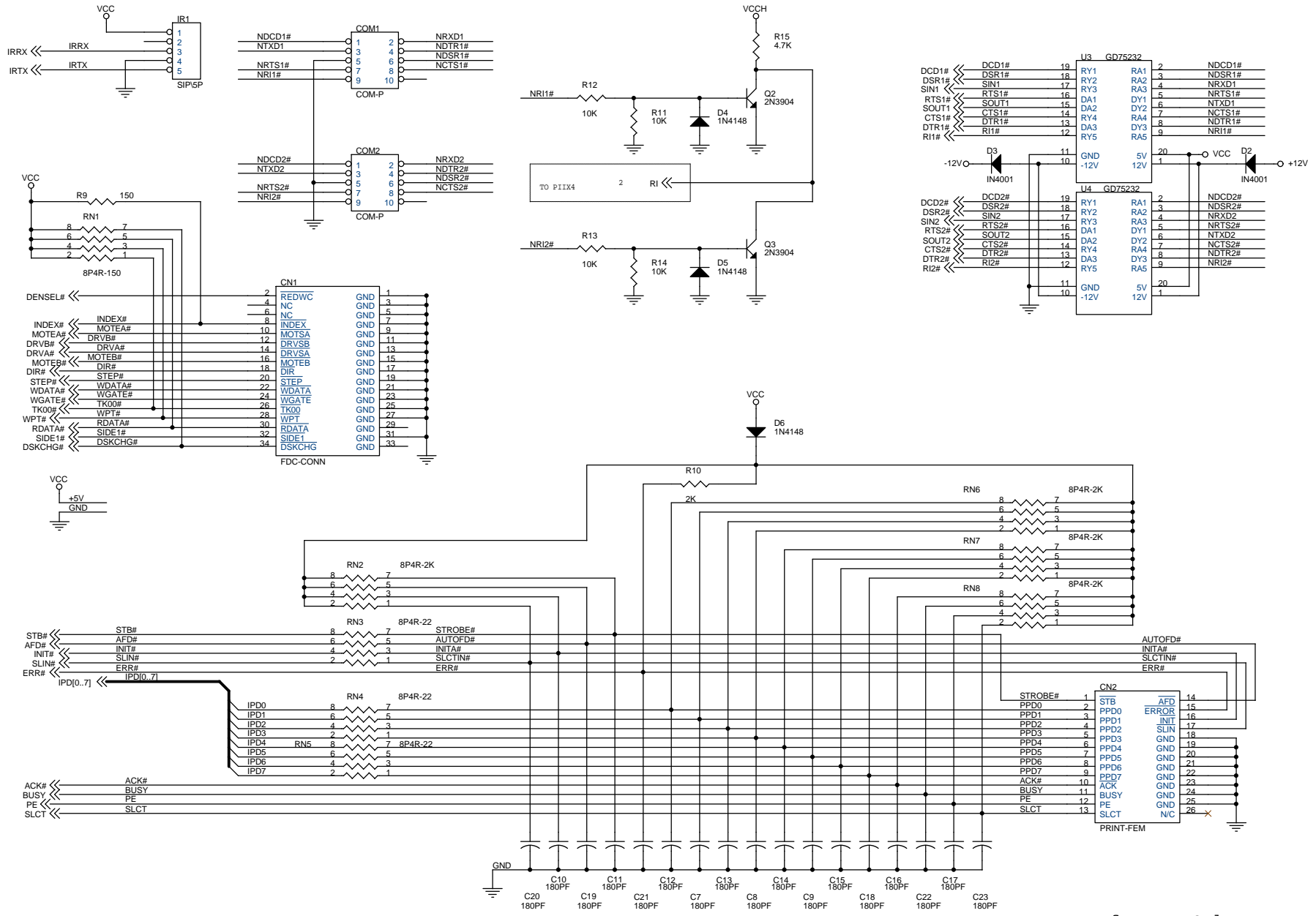
\* NOTE: Specification Subject to Change Without Notice.

For Reference Only

Title	
8693	
Size B	Document Number ITSA-CG-98004
Date: Wednesday, May 16, 2001	Rev 0.2
Sheet 2	of 5

SHORT	SELECTED
JP7, JP10, JP12-1, 2	SA12, SA13, SA14, SA15
JP7, JP10, JP12-2, 3	SCLK, SDAT, FAN_TAC3, FAN_CTL3

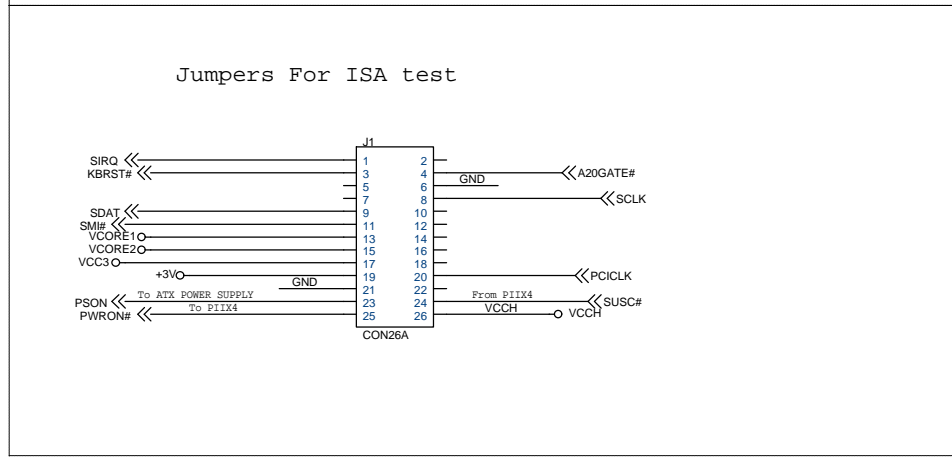
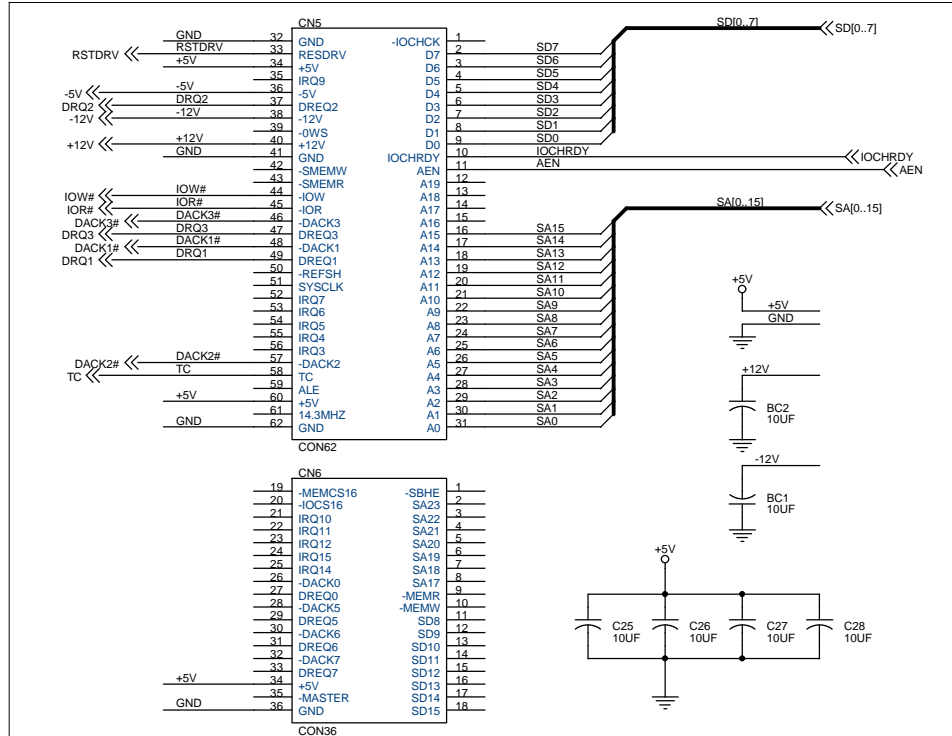
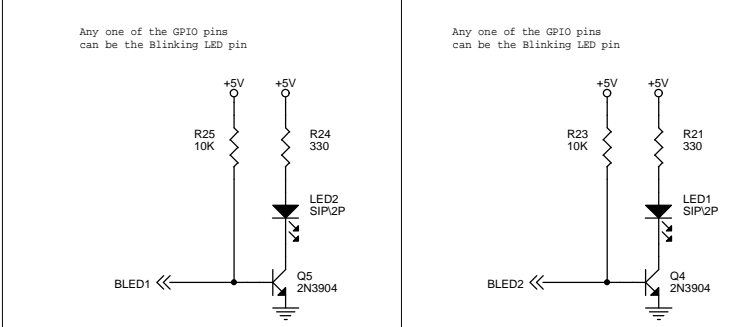
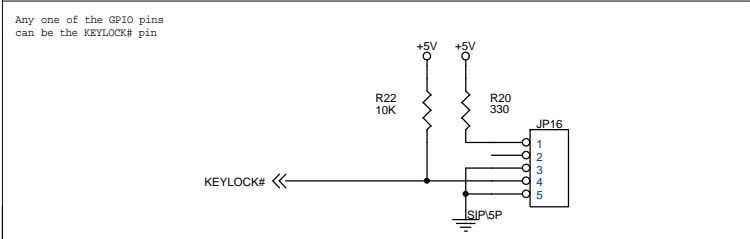
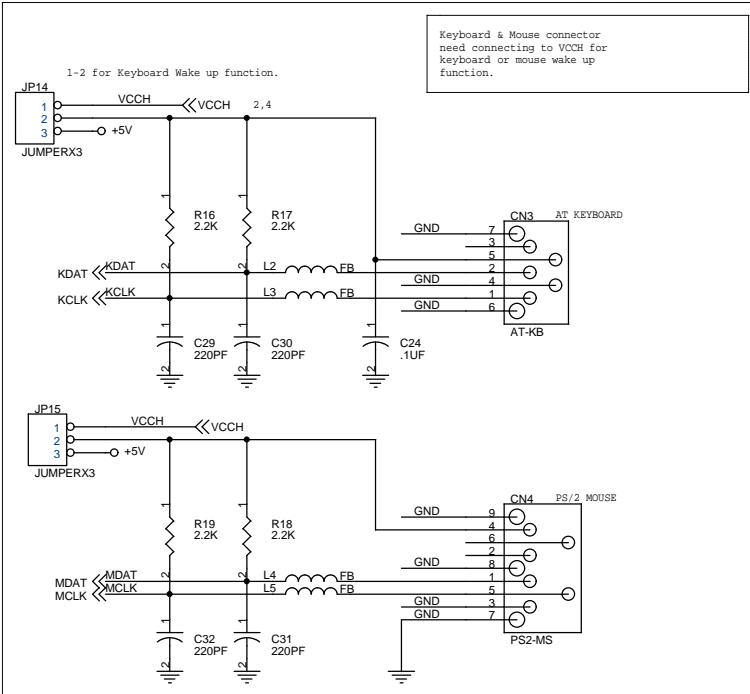
Jumper	Configuration
JP6	1-2 SHORT
JP7, JP10, JP12	2-3 SHORT



\* NOTE: Specification Subject to Change Without Notice.

For Reference Only

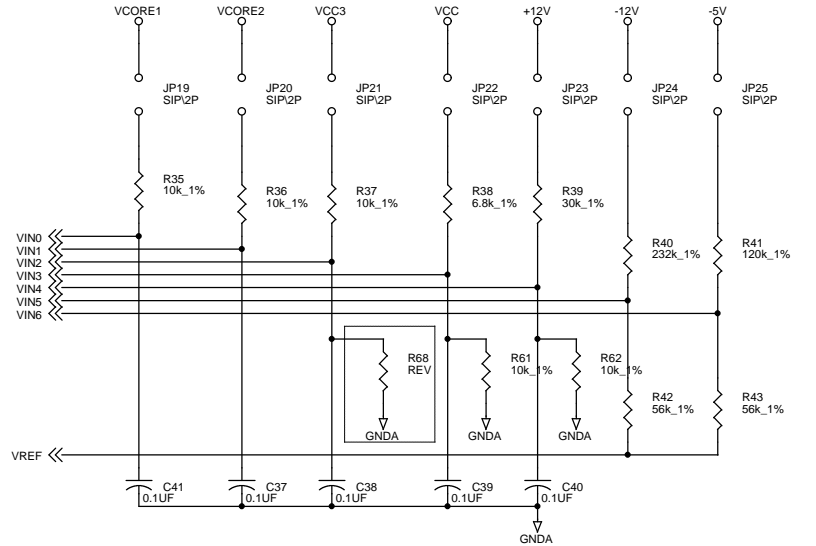
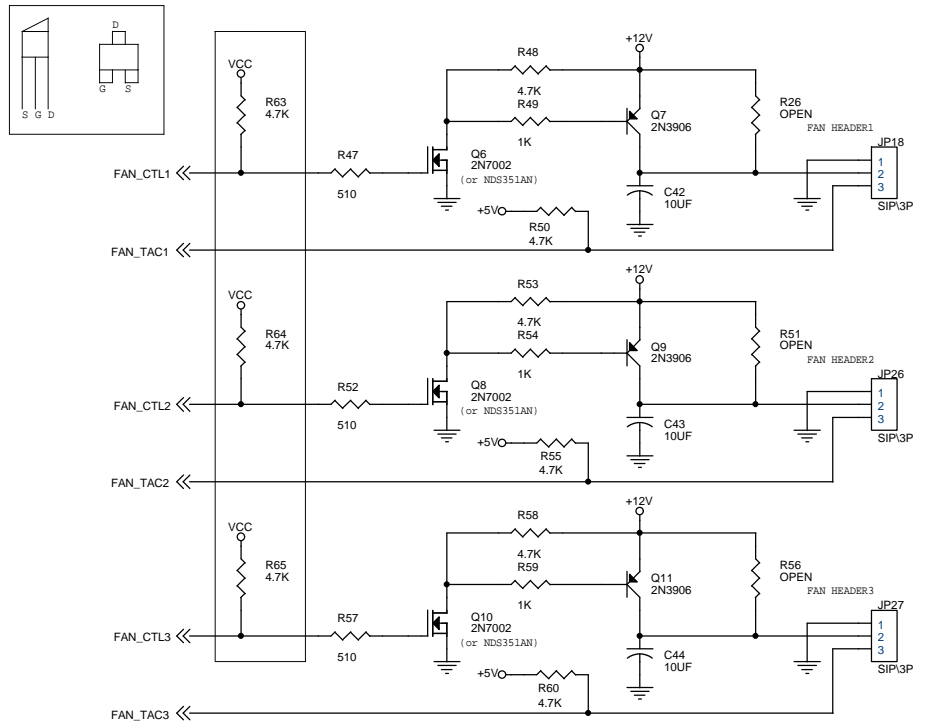
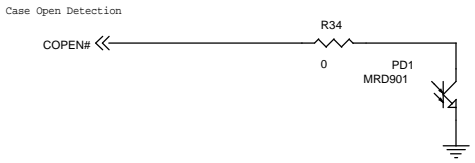
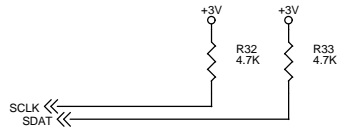
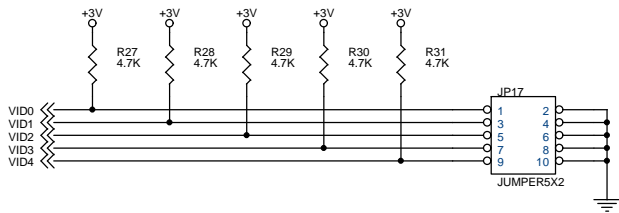
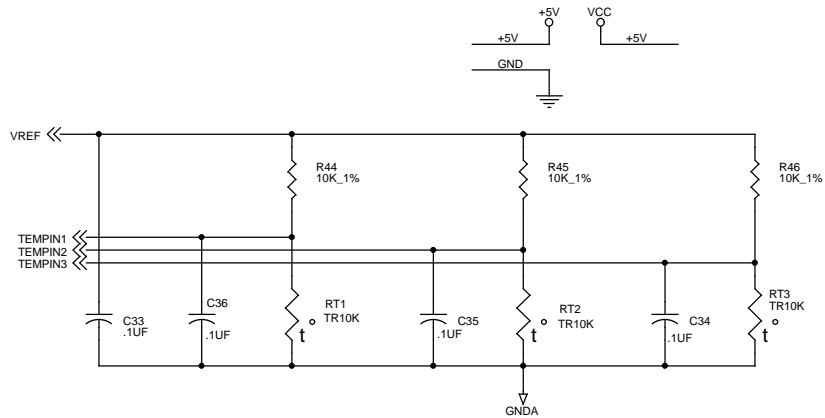
Title		
I/O CONNECTOR		
Size	Document Number	Rev
B	ITSA-CG-98004	0.2
Date:	Wednesday, May 16, 2001	Sheet 3 of 5



For Reference Only

Title		
ISA & KB CONNECTOR		
Size B	Document Number	Rev
B	ITSA-CG-98004	0.2
Date:	Wednesday, May 16, 2001	Sheet 4 of 5

\* NOTE: Specification Subject to Change Without Notice.



Specification Subject to Change Without Notice.

For Reference Only

Title		
FAN.THERMISTOR		
Size	Document Number	Rev
B	ITSA-CG-98004	0.2
Date:	Wednesday, May 16, 2001	Sheet 5 of 5